



HYDRONIC

EBERSPÄCHER WATER HEATERS – THE RIGHT HEAT WHERE YOU WANT IT

The advantage of Eberspächer water heaters is that they pre-heat both the vehicle interior and the engine. They are usually installed in the engine compartment and integrated into the coolant circuit. Heat is drawn off from the vehicle's own heat exchanger – finely dosed hot air is distributed throughout the vehicle via the existing air ducts. A timer switch to pre-programme the start of the heating phase and a radio or telephone-operated remote control provide additional convenience.

EBERSPÄCHER HYDRONIC:

- Two-fold benefits: pre-heated interior plus pre-heated engine – the engine start is more gentle on the engine, uses less fuel and is more environmentally friendly.
- Heat distribution via the vehicle's own air ducts.
- Low fuel consumption.
- Noise-optimised and energy-saving.
- Pleasant cab ventilation in the summer (Hydronic 4 / 5, optional).
- Fully-electronic function sequence control.
- Constant function monitoring.
- Safety and diagnostic system.
- Low maintenance and easy to service.
- All Eberspächer heaters have EU type approval and are also GS-inspected.

SPECIAL PLUS POINTS OF HYDRONIC 2 COMMERCIAL:

- Extra long service life of 5,000 operating hours.
- Multi-fuel capability up to 100% FAME.
- Guaranteed to start in temperatures as low as -40°C.
- Extremely quiet due to optimised casing insulation and 1.2 kW low output setting.
- Fast heating using the power setting.

SPECIAL PLUS POINTS OF HYDRONIC M:

- Service life twice as long (6,000 operating hours).
- Automatic altitude adjustment of the Hydronic M10 / M12 up to 3,500m.





TECHNICAL DATA

AIRTRONIC – THE RIGHT HEATER FOR EVERY NEED



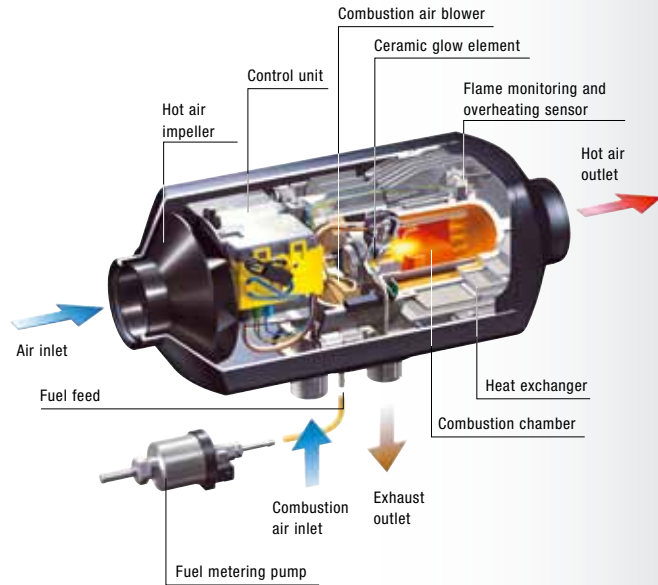
EBERSPÄCHER AIRTRONIC

Gasoline Version Diesel Version	B D	Airtronic D2 with 60mm Hood				Airtronic D4* with 90mm Hood				Airtronic D4 Plus* with 75mm Hood			
		Low	Medium	High	Power	Low	Medium	High	Power	Low	Medium	High	Power
Voltage	Volt	12 / 24				12 / 24				12 / 24			
Heat Output	Watt	850	1,200	1,800	2,200	900	2,000	3,000	4,000	900	2,000	3,000	4,000
Air Flow Volume	kg / h	40	60	90	105	60	110	150	185	55	100	140	175
Electrical Power Consumption	Watt	8	12	22	34	7	13	24	40	7	16	30	55
Fuel Consumption	l / h	0.10	0.15	0.23	0.28	0.11	0.25	0.38	0.51	0.11	0.25	0.38	0.51
Dimensions L x W x H	mm	310 x 115 x 122				376 x 140 x 150				376 x 140 x 150			
Weight	kg	2.7				4.5				4.5			

*100% biodiesel-compatible in accordance with FAME DIN EN 14214.

HOW THE AIRTRONIC D2 AIR HEATER WORKS

Combustion air from the environment and fuel from the vehicle tank are mixed and ignited in the combustion chamber. Fresh or recirculated air is heated by the thermal energy and fed into the cab.



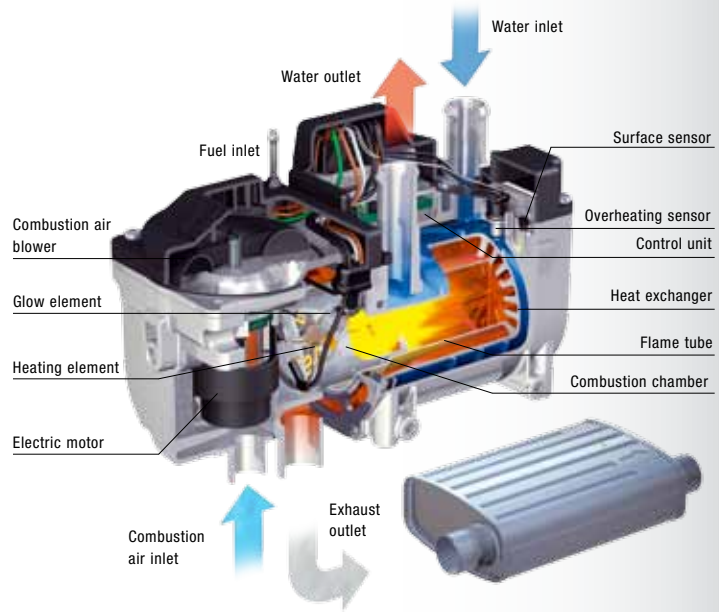
Airtronic B4 with 90mm Hood				Airtronic D5* with 90mm Hood				D8 LC with 100mm Hood	
12				12 / 24				12 / 24	
Low	Medium	High	Power	Low	Medium	High	Power	Low	High
1,300	2,100	3,200	3,800	1,600	2,700	4,800	5,500	3,500	8,000
85	120	160	185	155	190	275	280	310	310
9	15	29	40	25	35	80	85	115	115
0.18	0.29	0.46	0.54	0.20	0.34	0.58	0.66	0.40	1.05
376 x 140 x 150				530 x 170 x 185				653 x 260 x 250	
4.5				9.3				14	

*100% biodiesel-compatible in accordance with FAME DIN EN 14214.

We are certified in accordance with ISO TS 16949,
DIN / ISO 9001 and DIN / ISO 14001.

HOW THE HYDRONIC 2 COMMERCIAL WATER HEATER WORKS

Combustion air from the environment and fuel from the vehicle tank are mixed and ignited in the combustion chamber. The heat exchanger transfers the heat energy to the vehicle's own cooling water system.



EBERSPÄCHER HYDRONIC



Diesel Version	Hydronic 2 Commercial*				Hydronic 2 Economy D4S			Hydronic 2 Economy D5S		
Voltage	12 / 24				12					
Control / Heat Settings	Low	High	Power		Low	High	Power	Low	High	Power
Heat Output	1,200	2,100	4,800		2,100	4,100	4,300	2,100	5,000	5,200
Water Throughput	12V – 680 at 0.1 bar / 24V – 1,600 at 0.1 bar				680 at 0.1 bar					
Electrical Power Consumption	18	23	48		12	21	27	12	37	40
Fuel Consumption	0.15	0.26	0.59		0.26	0.5	0.52	0.26	0.61	0.64
Dimensions L x W x H	214 x 86 x 139				214 x 86 x 139					
Weight	2.4				2.4					

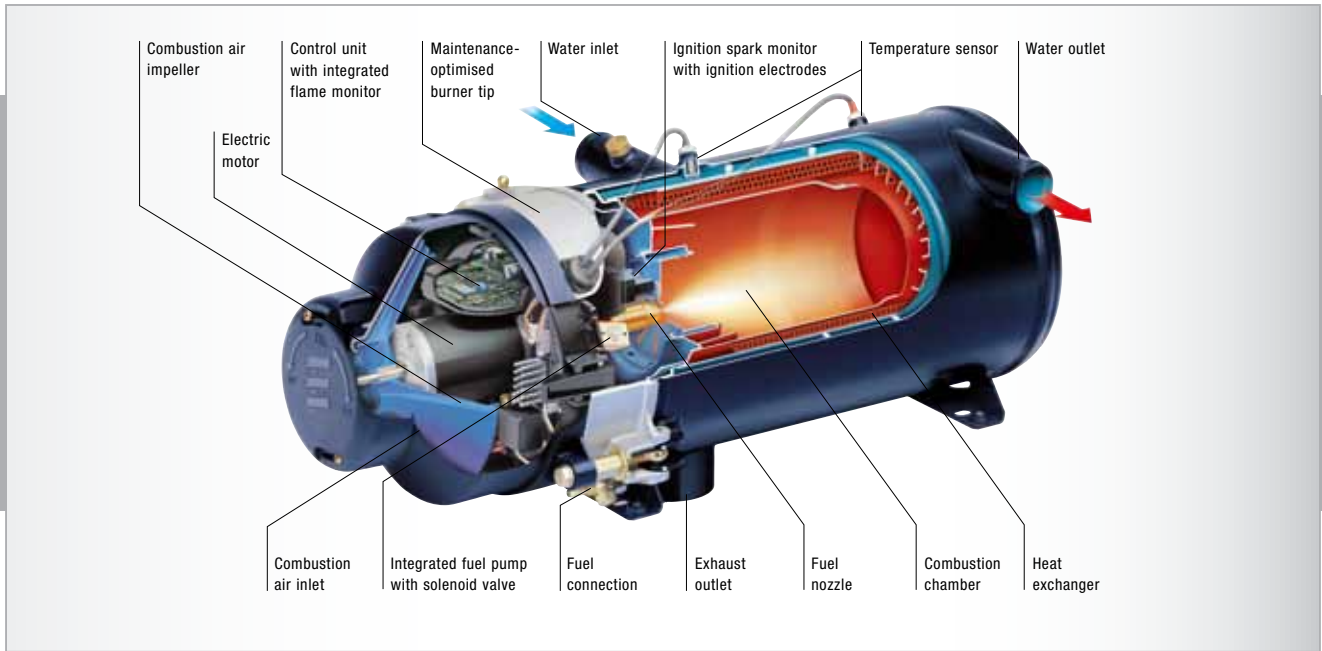
*100% biodiesel-compatible in accordance with FAME DIN EN 14214.



EBERSPÄCHER HYDRONIC

Diesel Version	Hydronic M8 Biodiesel*				Hydronic M10				Hydronic M12					
Voltage	12 / 24				12 / 24				12 / 24					
Control / Heat Settings	Low	Medium	High	Power	Low	Medium	High	Power	Low	Medium 1	Medium 2	Medium 3	High	Power
Heat Output	1,500	3,500	5,000	8,000	1,500	3,500	8,000	9,500	1,200	1,500	3,500	5,000	9,500	12,000
Water Throughput	1,400 at 0.14 bar				1,400 at 0.14 bar				1,400 at 0.14 bar					
Electrical Power Consumption	35	39	46	55	35	39	60	86	34	35	39	46	86	132
Fuel Consumption	0.18	0.40	0.65	0.90	0.18	0.40	0.90	1.20	0.15	0.18	0.40	0.65	1.20	1.50
Dimensions L x W x H	331 x 138 x 174													
Weight	6.2				6.2				6.2					

*100% biodiesel-compatible in accordance with FAME DIN EN 14214.



EBERSPÄCHER HYDRONIC

Version		Hydronic L16	Hydronic L24	Hydronic L30*	Hydronic L35*
Fuel		Diesel / Oil Fuel EL			
Voltage	Volt	24	24	24	24
Control / Heat Settings		-	-	-	-
Heat Output	Watt	16,000	24,000	30,000	35,000
Electrical Power Consumption	Watt	60	80	105	120
Fuel Consumption	l / h	2.00	2.90	3.65	4.20
Dimensions L x W x H		600 x 230 x 222			
Weight	kg	18	18	18	18

*100% biodiesel-compatible in accordance with FAME DIN EN 14214.



HYDRONIC COMPACT VERSION

The HYDRONIC heater range is also available in compact versions with the water pump, fuel filter and fuel shut-off components fitted. An economical version especially for tight installation spaces.



ACCESSORIES

CONTROL ELEMENTS AND HEAT EXCHANGERS

CONTROL ELEMENTS							
Model	Mini-Controller	701 Series Programmer	801 Series Modulator	Timer Switch EasyStart T	Radio Remote Control EasyStart R*	Radio Remote Control EasyStart R+	Calltronic Telephone Remote Control*
Heater Model	Airtronic	Airtronic / Hydronic	Airtronic	Airtronic / Hydronic	Airtronic / Hydronic	Airtronic / Hydronic	Airtronic / Hydronic
Description	To control the compartment temperature. With integrated heating / ventilation switch.	Controls room temperature. With integrated heating / ventilation option.	Controls room temperature. With integrated heating / ventilation option.	For installation in the vehicle interior. Innovative, intuitive menu navigation via the menu bar. 3 start of heating times within 7 days can be programmed.	Basic model, can be combined with EasyStart T. With feedback for heater function.	Convenience version. All functions of the EasyStart T included. With feedback for heater function.	GSM module with voice chip. The pre-heater can be operated via mobile or landline telephone (tone dialling).

* A control element for temperature pre-selection is required for operation with air heaters (Airtronic Mini-Controller or EasyStart T).

EBERSPÄCHER WATER PUMPS



		Flowtronic 5000	Flowtronic 5000 S*	Flowtronic 6000 SC**	Water Station***
Voltage	Volt	24	24	24	The water station is a customer-specific, ready for installation unit with a heater and individual components such as a water pump, control and check valves and water and fuel filters. Low installation costs, fixed interfaces for water, fuel, exhaust and electronic connections as well as easy handling due to clear arrangement of the components.
Electrical Power Consumption	Watt	104	104	210	
Dimensions L x W x H	mm	229 x 99 x 76	249 x 99 x 76	229 x 115 x 110	
Delivery Rate (Pump)	l / h	5,200 at 0.2 bar	5,200 at 0.2 bar	6,000 at 0.4 bar	

* With magnetic coupling.

** With magnetic coupling and integrated heat output diagnosis.

*** Built to customer specification.