

## HYDRONIC M-II SERIES: 27,300, 32,450, 42,000 BTU - CARB APPROVED

### SCOPE OF DELIVERY

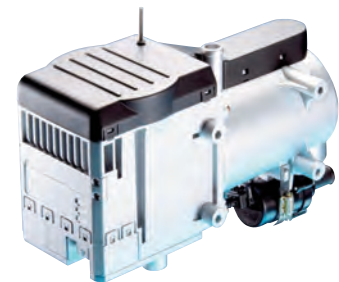
DESCRIPTION	PART NUMBER	Heater	Harness	Fuel System	Coolant Hose	Mounting Bracket	Control Options / Timers	Fuel Pickup Pipe	Hardware Kit	Exhaust Pipe	Intake Pipe	Boxed	Manuals
HYDRONIC M8 biodiesel 12 volt	25 2470 05 00 00	•						•					•
HYDRONIC M8 biodiesel 24 volt	25 2471 05 00 00	•						•					•
HYDRONIC M10 12 volt	25 2434 05 00 00	•											•
HYDRONIC M10 24 volt	25 2435 05 00 00	•											•
HYDRONIC M12 12 volt	25 2472 05 00 00	•											•
HYDRONIC M12 24 volt	25 2473 05 00 00	•											•
HYDRONIC M8 biodiesel 12 volt Boxed Kit	25 2824 70 08 10	•	•	•	•	•	•	•	•	•	•	•	•
HYDRONIC M8 biodiesel 24 volt Boxed Kit	25 2824 71 08 10	•	•	•	•	•	•	•	•	•	•	•	•
HYDRONIC M10 12 volt Boxed Kit	25 2824 34 10 10	•	•	•	•	•	•	•	•	•	•	•	•
HYDRONIC M10 24 volt Boxed Kit	25 2824 35 10 10	•	•	•	•	•	•	•	•	•	•	•	•
HYDRONIC M12 12 volt Boxed Kit	25 2824 72 12 10	•	•	•	•	•	•	•	•	•	•	•	•
HYDRONIC M12 24 volt Boxed Kit	25 2824 73 12 10	•	•	•	•	•	•	•	•	•	•	•	•
HYDRONIC M12 12 volt Boxed Kit w/high Capacity Pump	25 2824 72 00 12	•	•	•	•	•	•	•	•	•	•	•	•
HYDRONIC M12 24 volt Boxed Kit w/high Capacity Pump	25 2824 73 00 24	•	•	•	•	•	•	•	•	•	•	•	•
<b>UNIVERSAL INSTALLATION KITS</b>													
JE Universal Installation Kit 12V / 24V	25 2435 80 00 00		*	•	•	•	•	•	•	•	•	•	•
Espar Universal Install 12V with diagnostic connection	25 2800 90 10 12		•	•	•	•	•	•	•	•	•	•	•
Espar Universal Install 24V with diagnostic connection	25 2800 90 10 24		•	•	•	•	•	•	•	•	•	•	•

\* = Harness has blower motor relay

<b>HYDRONIC M8 12V</b> DIESEL COOLANT HEATER - 27,300 BTU	<b>25 2470 05 00 00</b>
<b>HYDRONIC M8 24V</b> DIESEL COOLANT HEATER - 27,300 BTU	<b>25 2471 05 00 00</b>
<b>HYDRONIC M10 12V</b> DIESEL COOLANT HEATER - 32,450 BTU	<b>25 2434 05 00 00</b>
<b>HYDRONIC M10 24V</b> DIESEL COOLANT HEATER - 32,450 BTU	<b>25 2435 05 00 00</b>
<b>HYDRONIC M12 12V</b> DIESEL COOLANT HEATER - 42,000 BTU	<b>25 2472 05 00 00</b>
<b>HYDRONIC M12 24V</b> DIESEL COOLANT HEATER - 42,000 BTU	<b>25 2473 05 00 00</b>

### Spare parts

DESCRIPTION	PART NUMBER
Burner	25 2435 99 1100
Casing for Heat Exchanger	25 2435 99 0102
Water Pump 12 Volt	25 2434 99 2501
Water Pump 24 Volt	25 2435 99 2501
Flame Sensor	25 1920 35 0000
Glow Plug 12 Volt	25 2434 01 0100
Glow Plug 24 Volt	25 2435 01 0100
Cable Harness	25 2435 25 0200
Temperature Sensor	25 2435 40 0100
Plastic Cover	25 2435 99 0103
Seal for Combustion Chamber	25 2435 01 0010
O-Ring (19.8 x 2.3)	22 1000 70 0017
O-Ring (117.07 x 3.53)	22 1000 70 0015
Sensor Spring	25 2281 01 0009
Atomizing Screen	25 2069 10 0102
Hose Clip	152 61 004
Timer, 7-Day	22 1000 30 3600
Programmable Timer 12 Volt	5670433
Fuel Pump Screen	20 1312 00 00 06
Fuel Meter Pump 12 volt	22 4617 01 00 00
Fuel Meter Pump 24 volt	22 4618 01 00 00



1  
2  
3